



MONTHLY MEMBERSHIP PROGRESS REPORT

District 5 NE

Results as of: 5/31/2015

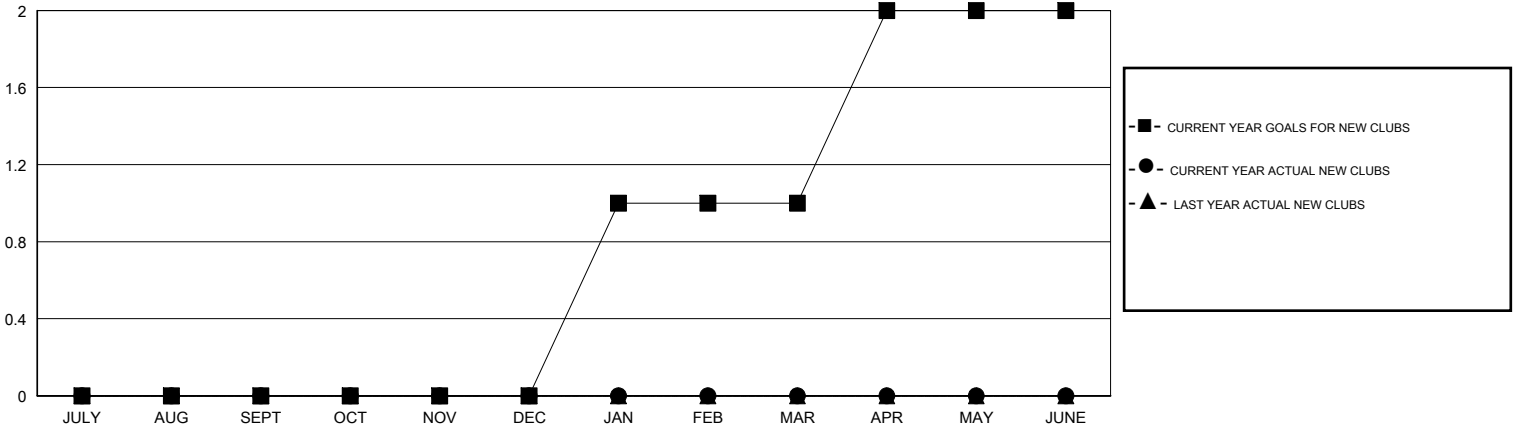
GMT: Judy Hankom

LOCATION NORTH DAKOTA

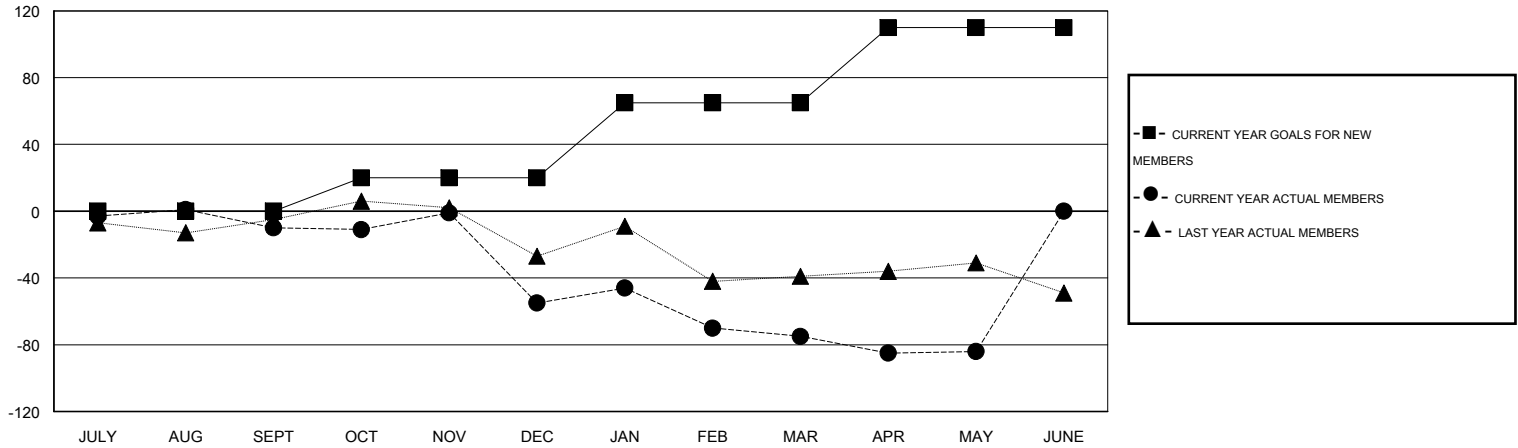
GMT CA 1

Clubs					Members				
RESULTS FOR 2014-2015					RESULTS FOR 2014-2015				
QUARTER	NEW CLUB GOAL	NEW CLUBS	DROPPED CLUBS	NET GAIN/LOSS	QUARTER	NEW MEMBER GOAL	CHARTER AND NEW MEMBERS ADDED	DROPPED MEMBERS	NET GAIN/LOSS
JULY/AUG/SEPT	0	0	1	-1	JULY/AUG/SEPT	0	20	30	-10
OCT/NOV/DEC	0	0	1	-1	OCT/NOV/DEC	20	26	71	-45
JAN/FEB/MAR	1	0	0	0	JAN/FEB/MAR	45	63	83	-20
APR/MAY/JUNE	1	0	0	0	APR/MAY/JUNE	45	17	26	-9

GOALS AND ACTUAL NEW CLUBS CUMULATIVE



GOALS AND ACTUAL MEMBERS CUMULATIVE



DROPPED CLUBS: 2	35 CLUBS OF 57 ADDED 1 OR MORE NEW MEMBERS	<u>GENDER DISTRIBUTION</u>	
		MALE	1,079 (76.25%)
<u>DROPPED MEMBERS</u>	CLICK HERE FOR HEALTH ASSESSMENT DATA	FEMALE	336 (23.75%)
DECEASED		13	FAMILY UNIT MEMBERS
CLUB CANCELLED	21	HEAD OF HOUSEHOLD	78
OTHER	176	NON-HEAD OF HOUSEHOLD	78
TOTAL	210		